

## *monty® Tyre Changers*



The new generation

## Tyre changer for small garages and service stations



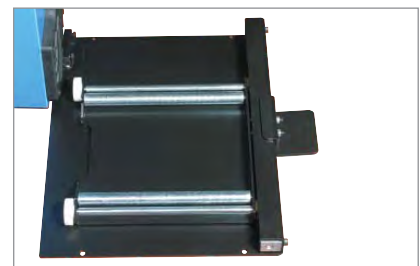
- The strong and rugged design of all components ensures long life.
- The special design of the machine post guarantees minimum torsion.
- With the outer clamping range of up to 20" the monty 1270 is designed to handle larger tyres as well.
- The mounting arm swings to the side so that the machine can be installed in a space-saving way directly near a wall.
- The double-acting bead breaker cylinder ensures gentle handling of rims.
- The bead breaker is provided with a large anti-skid rubber pad to preserve tyres and rims.
- The one-part mounting head can be adjusted vertically and horizontally in spaced-apart position relative to the rim.
- The self-centring four-jaw chuck controlled by two clamping cylinders ensures that the rim is always correctly clamped.
- Including oiler, water separator, manual tyre inflator and quick-inflating

### Bead breaker blade



Owing to its special shape the bead breaker blade handles rims most gently and facilitates operation considerably.

### Optional extra



The roller board is an optional extra for ergonomic bead breaking.

## Tyre changers for shops with medium tyre service volume



- Those machines handle all conventional tyres in the market quickly and easily. If combined with the optional pneumatic mounting tool easymont pro and other optional adaptors, the machines can also handle run-flat tyres.
- Outer clamping range up to 20".
- The machine is equipped with a double-acting bead breaking cylinder and an oversize bead breaker blade which prevent damage to rim and tyre.
- Alloy rims are handled particularly gently as the mounting head and the clamping jaws are provided with plastic protections. The one-part mounting head can be adjusted vertically and horizontally in spaced-apart position relative to the rim.
- The automatic tilt-back post and the four ergonomic pedals stand for user-friendly operation.

- Accurate and quick operation is guaranteed by the self-centring four-jaw chuck controlled by two clamping cylinders and the locked post.

### Additional feature of monty 3300

The post is tilted pneumatically (backwards and into working position).

### Additional feature of the GP versions

The pedal-controlled inflating system via air ports in the jaws is a useful tool for tyre inflation.

### Additional feature of monty 3300 2-speed



The pedal-controlled two-speed chuck (3-ph versions only) makes tyre service even quicker.

With the pedal-controlled inflation system the tyres are inflated quickly and safely. The tool box keeps tools and valves within easy reach of the operator.

## Tyre changers for shops with high tyre service volume



- Those machines handle all conventional tyres in the market quickly and easily. If combined with the optional pneumatic mounting tool easymont pro and other optional adaptors, the machines can also handle run-flat tyres.
- With the outer clamping range of up to 24" the machines are designed to handle tyres of large diameter as well. With optional clamping jaws the clamping range can even be extended to 28".
- The machines are equipped with a double-acting bead breaking cylinder and an oversize bead breaker blade which prevent damage to rim and tyre. Moreover the bead breaker blade is supported in three joints which ensures gentle bead breaking.
- Alloy rims are handled particularly gently as the mounting head and the clamping jaws are provided with plastic protections. The one-part mounting head can be adjusted vertically and horizontally in spaced-apart position relative to the rim
- The pneumatic tilt-back post and the ergonomic pedals stand for user-friendly operation. The bead breaker pedal is provided in ergonomic position relative to the bead breaker arm, avoiding any confusion with other pedals. Moreover the bead breaker is adjustable in five positions, thus guaranteeing an always optimum position of the blade relative to the wheel.
- Accurate and quick operation is guaranteed by the self-centring four-jaw chuck controlled by two clamping cylinders and the pneumatically locked post.
- The pedal-controlled two-speed chuck (3-ph versions only) makes tyre service even quicker.



Optional quick-exchange device and mounting head

- Practical tool box for tools and valves, including an integrated pressure gauge.

### Additional feature of the GP version



The pedal-controlled inflating system via air ports in the jaws facilitates work considerably.



## Professional tyre changers for wheels up to 30" and for shops with high tyre service volume



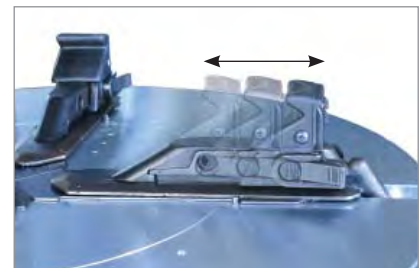
- The monty 3550 is equipped with the pneumatic mounting tool easymont pro, hence can handle all conventional and run-flat tyres in the market quickly and easily (additional optional accessories are required for PAX and CSR). Owing to the large outer clamping range – up to 26" – (up to 30" with optional clamping jaws) the machine is perfectly suited to handle very large tyres.
- The machine is equipped with a double-acting bead breaking cylinder and an oversize bead breaker blade which prevent damage to rim and tyre. Moreover the bead breaker arm can be preset to two positions.
- Alloy rims are handled particularly gently as the mounting head and the clamping jaws are provided with plastic protections. The one-part mounting head can be adjusted vertically and horizontally in spaced-apart position relative to the rim; approach to the rim flange is accomplished pneumatically.
- Accurate and quick operation is guaranteed by the self-centring four-jaw chuck controlled by two clamping cylinders and the pneumatically locked post.
- The pedal-controlled two-speed chuck (3-ph versions only) and the roller-supported horizontal arm speed up operation even more.
- Pedal-controlled quick-inflating device for quick and safe tyre inflation.
- Practical tool box for tools and valves, including an integrated pressure gauge.
- Including tyre lever Wave, various plastic protections and quick-exchange device with plastic mounting head.

### Gentle



Special bead breaker blade to preserve tyre and rim

### Flexible



The sliding jaws allow to handle wheels from 10" to 26" (with optional jaws even up to 30").

## Pneumatic mounting tool easymont pro



- The practical pneumatic mounting tool is an indispensable accessory for mounting and demounting tyres which are difficult to handle, such as low profile tyres and run flat tyre systems. It is an optimum complement to a tyre changer.
- The pneumatic mounting tool is extremely rugged and specially suited for hard tyres owing to its strong cylinder.
- Bead breaking with the optional bead breaker disc is done dynamically during rotation of the tyre changer chuck, thus preserving rim and tyre.
- The tyre bead is pressed into the drop centre of the rim by means of a roller so that the mounting head can be positioned on the rim both easily and gently.
- During the demounting operation the bead depressor presses the upper bead into the drop centre of the rim so that it can be easily levered over the mounting head nose and finally demounted without any effort.
- During the mounting operation of the upper bead the roller retains the bead under the mounting head nose. The practical bead depressor follows rotation of the wheel, doing the otherwise tedious job of the operator, while preserving both tyre and rim.
- The pneumatic mounting tool is an optional extra for tyre changers from monty 2300 up to monty 3300 racing and can be easily fitted by the customer. It is a standard feature of monty 3550.

### Simple



Gentle demounting with the bead depressor

### Optional



The plastic bead breaker disc is a useful accessory to prevent any damage to the rim

## monty® accessories – the systematic up-grade

Best. Nr. 4029338



**Mounting head** for rims with elevated spokes

Best. Nr. 4028884



**Mounting head adaptor**

Best. Nr. 4028229



**Quick-exchange device** including plastic mounting head for rims with elevated spokes

Best. Nr. 25946



**Tyre lever Wave**, specially designed for low-profile tyres and run-flat tyres such as DSST, RFT, but not for PAX or CSR. Standard on monty 3300 racing/GP and monty 3550/GP.

Best. Nr. 4029455



**+4" clamping jaws** to increase outer clamping range for monty 3300 racing/GP and 3550/GP

Best. Nr. 4028629



**+4" quick-exchange device** including steel mounting head for monty 3300 racing/GP and 3550/GP

Best. Nr. 4029337



**Mounting head** for motorcycle wheels

Best. Nr. 1977254



**Tyre booster**

Best. Nr. 1971534



**ecolift-2 monty**

Best. Nr. 4026913



**Extension** for mounting tool easymont pro

Best. Nr. 4029261



**Plastic disc** to break the upper bead. Only in conjunction with easymont pro.

Best. Nr. 4029520



**RSC-Kit**  
Only in conjunction with easymont pro.  
Consisting of:

- 26582** Plastic protection for bead breaker blade
- 4029352** Plastic tyre protection
- 4028648** Magic bead pusher
- 4029326** Rod with tapered roller 35 mm

## Technical data and standard equipment

Technical data		1270	2300	3300	3300/2-speed/GP	3300 racing/GP	3550
Inner clamping range	inch	12-22	12-22	12-22	12-22	12-24	14-28
Outer clamping range	inch	10-20	10-20	10-20	10-20	10-24	12-26
Rim width	inch	3-12	3-12	3-12	3-12	3-14	3-16
Max tyre width	inch	12	12	12	12	15	17
Max. wheel diameter	mm	1000	1000	1000	1000	1000	1200
Bead breaking range	mm	70-330	40-340	40-340	40-340	40-440	60-305/150-675
Max. opening of bead breaker	mm	330	340	340	340	440	675
Compressed air supply	bar	8-10	8-10	8-10	8-10	8-10	8-10
Space requirement (WxDxH)	mm	1840x770x970	1860x1160x1630	1850x1160x1700	1850x1160x1700	1900x1350x1650	1950x1350x1650
Weight	kg	149	210	220	220	240	320
Power supply		3PE AC 380-415V 50/60 Hz (special voltages on request)					
Chuck speed	rpm	7,0	7,0	7,0	7/13	7/13	7/13

Standard equipment		1270	2300	3300	3300/2-speed/GP	3300 racing/GP	3550
Tyre lever		•	•	•	•	•	•
Servicing unit with pressure relief valve and oiler		•	•	•	•	•	•
Manual inflator		•	•	•			
Pedal-controlled tyre inflator					•	•	•
Plastic protection for mounting nose			•	•	•	•	•
Holder for tyre lubricant container			•	•	•	•	•
Plastic protection for clamping jaws			•	•	•	•	•
Plastic rim protection			•	•	•	•	•
Tyre lever Wave						•	•
easymont pro							•

**Snap-on Equipment**

Phone: 1800 810 581

Postal: PO BOX 663 SEVEN HILLS NSW 1730

Email: [sota.equipment@snapon.com](mailto:sota.equipment@snapon.com)